

AUSTRIA

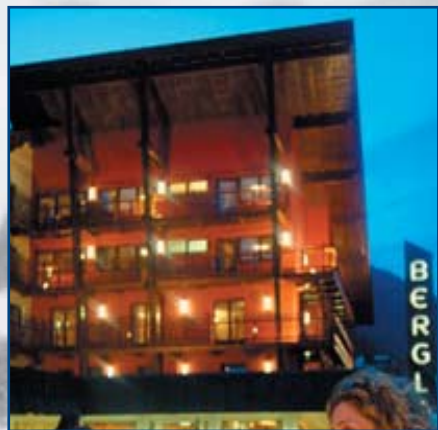
HOTELS, TRANSFERS & SKI PASSES



Hotel Sölderhof, Sölden



Hotel Tyrolerhof, Sölden



Hotel Bergland, Sölden

RESORT INFORMATION: Sölden

Altitude of resort:	1.377 m	Beginner:	53 km
Top elevation:	3:249 m	Intermediate:	63 km
Largest vertical drop:	1.872 m	Advanced:	28 km
Longest run:	12,8 km	Snowmaking:	40 km
Total length of slopes:	150 km	Snowboards:	funpark
More info: www.soelden.com		Number of Lifts	34

*** Hotel Sölderhof, Sölden, AUSTRIA **from \$ 660**

Gateway: Munich, Germany, Distance 285 km

Location: Centre, 150 m to lift

Capacity: 52 rooms, 100 beds

Facilities: Elevator, restaurant, dining room, bar, wellness center, public indoor pool incl.

Rooms: Bathroom, telephone, radio, TV, safe

Price: \$ 720 - \$ 1.160, depending on week - SPECIAL: \$ 660 from Dec. 6 - 13, 2008

Meals: Breakfast buffet, four course dinner (choice of main dish), weekly ski hut evening

Single Room Supplement: \$ 134

6 Day Ski pass (purchased locally): up to \$ 330

Reduction for 3rd person in room: 0-3 years 100%, 4-11 Years 70%, 12-14 years 50%, else 20%

One way transfer via motorcoach from gateway city to resort hotel \$ 100

Prices are in CAN \$ per person based on 7 nights (Sat-Sat) in double or single room

**** Hotel Tyrolerhof, Sölden, AUSTRIA **from \$ 730**

Gateway: Munich, Germany, Distance 285 km

Location: Centre, 300 m to lift

Capacity: 100 rooms, 200 beds

Facilities: Elevator, restaurant, bar, dining room, wellness center, sun terrace

Rooms: Bath or shower, telephone, radio, TV

Price: \$ 790 - \$ 1.600, depending on week - SPECIAL: \$ 730 from Dec. 6 - 13, 2008

Meals: Breakfast buffet, evening buffet, salad buffet, dessert buffet

Single Room Supplement: \$ 605

6 Day Ski pass (purchased locally) up to \$ 330

Reduction for 3rd person in room: 0-3 years 100%, 4-7 years 60%, 8-12 years 30%, 13-15 years 20%, else 10%

One way transfer via motorcoach from gateway city to resort hotel \$ 100.

Prices are in CAN \$ per person based on 7 nights (Sat-Sat) in double or single room

**** Hotel Bergland, Sölden, AUSTRIA **from \$ 960**

Gateway: Munich, Germany, Distance 285 km

Location: Centre, right at the lifts

Capacity: 86 rooms, 160 beds

Facilities: Elevator, restaurant, dining room, bar, indoor pool, wellness center, beauty center

Rooms: Bath or shower, telephone, radio, TV, hair-dryer

Price: \$ 1.050 - \$ 1.870, depending on week - SPECIAL: \$ 960 from Dec. 13 - 20, 2008

Meals: Breakfast buffet, five course dinner (choice of main dish), salad and cheese buffet

Single Room Supplement: \$ 82 - \$ 110, depending on week

6 Day Ski pass (purchased locally) up to \$ 330

Reduction for 3rd person in room: 0-3 years 100%, 4-11 years 50%, 12-99 years 30%

One way transfer via motorcoach from gateway city to resort hotel \$ 100..

Prices are in CAN \$ per person based on 7 nights (Sat-Sat) in double or single room